



St. Johns County School District

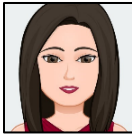
Enrollment Questions

Last Modified 11/14/2016

Who Ya Gonna Call?

Situation:	District Contact:	Phone #:
Foreign Exchange	Denise Summerix	547-7752
Foster Care	*Your District Social Worker	
Homeless/UAY/ASSIST	Chris Stone	547-7589
	Kim McNickle	547-7593
Home Education/Home School	Phyllis Ingram	547-7753
Immigrant Families	*Your District Social Worker	
Immunization/Physicals	Melissa Petty	547-7628
Migrant Families	Lorna Kirkham	547-8926
Military Families	*Your District Social Worker	
Pregnant Students	Jan Caban	547-7587

***District Social Workers by Building**



Christy McKendrick
547-7720 or 17720

Bartram Trail High
 Creekside High
 Cunningham Creek High
 Durbin Creek High
 Fruit Cove Middle
 Hickory Creek Elementary
 Julington Creek Elementary
 Landrum Middle
 Liberty Pines Academy
 Ocean Palms Elementary
 Palencia Elementary
 Patriot Oaks Academy
 Ponte Vedra High
 PVPV/Rawlings Elementary
 Switzerland Point Middle
 Timberlin Creek Elementary
 Valley Ridge Academy



Yvonne Ross
547-7513 or 17513

Gaines/Transitions
 Gamble Rogers Middle
 Hartley Elementary
 RB Hunt Elementary
 Ketterlinus Elementary
 Otis Mason Elementary
 Mill Creek Elementary
 Murray Middle
 Pacetti Bay Middle
 Pedro Menendez High
 St. Augustine High
 St. Johns Technical
 Sebastian Middle
 Wards Creek



Jan Caban
547-7587 or 17587

Crookshank Elementary
 Osceola Elementary
 Southwoods Elementary
 The Webster School

Need an Interpreter? Call Shameka Gilyard at 547-8924
 ¿Necesitas un intérprete? Llama a Shamea Gilyard al 547-8924